

Drake
Resources
Limited

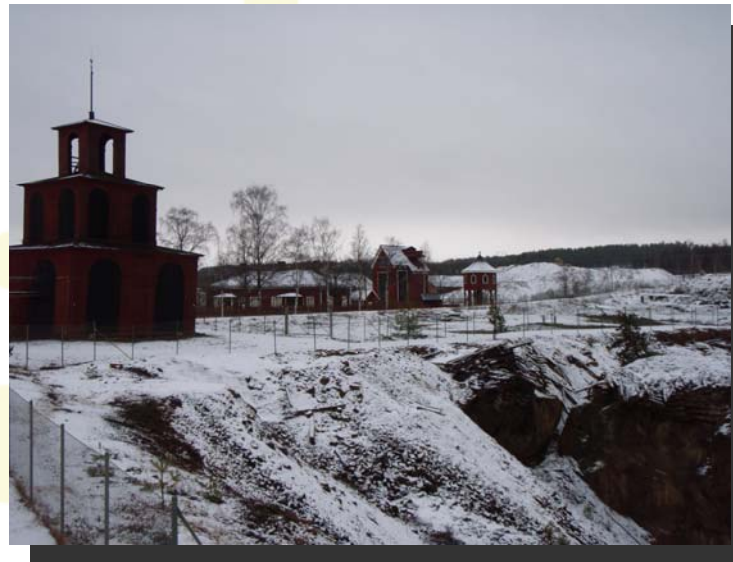
**Copper, gold and
zinc in Sweden**

**MINING
2008**
29 - 31 OCTOBER, 2008
HILTON BRISBANE - AUSTRALIA

Drake Resources Ltd



- Advanced exploration properties in Sweden and Australia
 - Includes the Falun copper-gold deposit
- Investments: 8.2% of Aura Energy Ltd



The Drake-Zinifex Alliance legacy



- In 2006 Drake was a gold-silver explorer in NSW and Western Australia
- Two years in alliance and joint ventures with Zinifex has transformed the company
- 9 new projects in 2 countries
- Approximately \$2.0 million spent on exploration and project generation
- Oz Minerals rationalised its portfolio after global review
- Projects now 100% Drake



Sweden

A mining country for more than a millennium



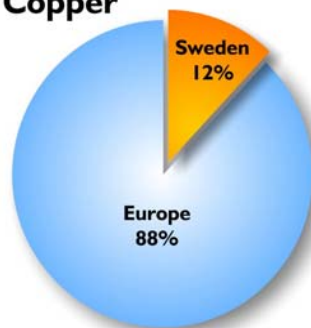
- Country made rich on copper and silver
- Significant producer of copper, zinc, gold and iron
- Skilled workforce
- Exceptional infrastructure – power, rail, road
- Abundant fresh water



Sweden: a significant copper and zinc producer

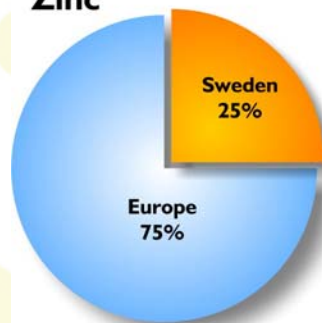


Copper



- Copper: 4% of world total

Zinc



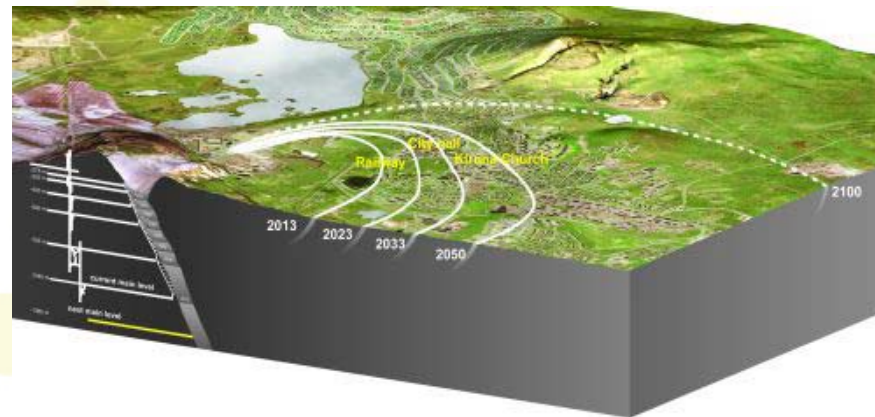
- Zinc 8% of world total

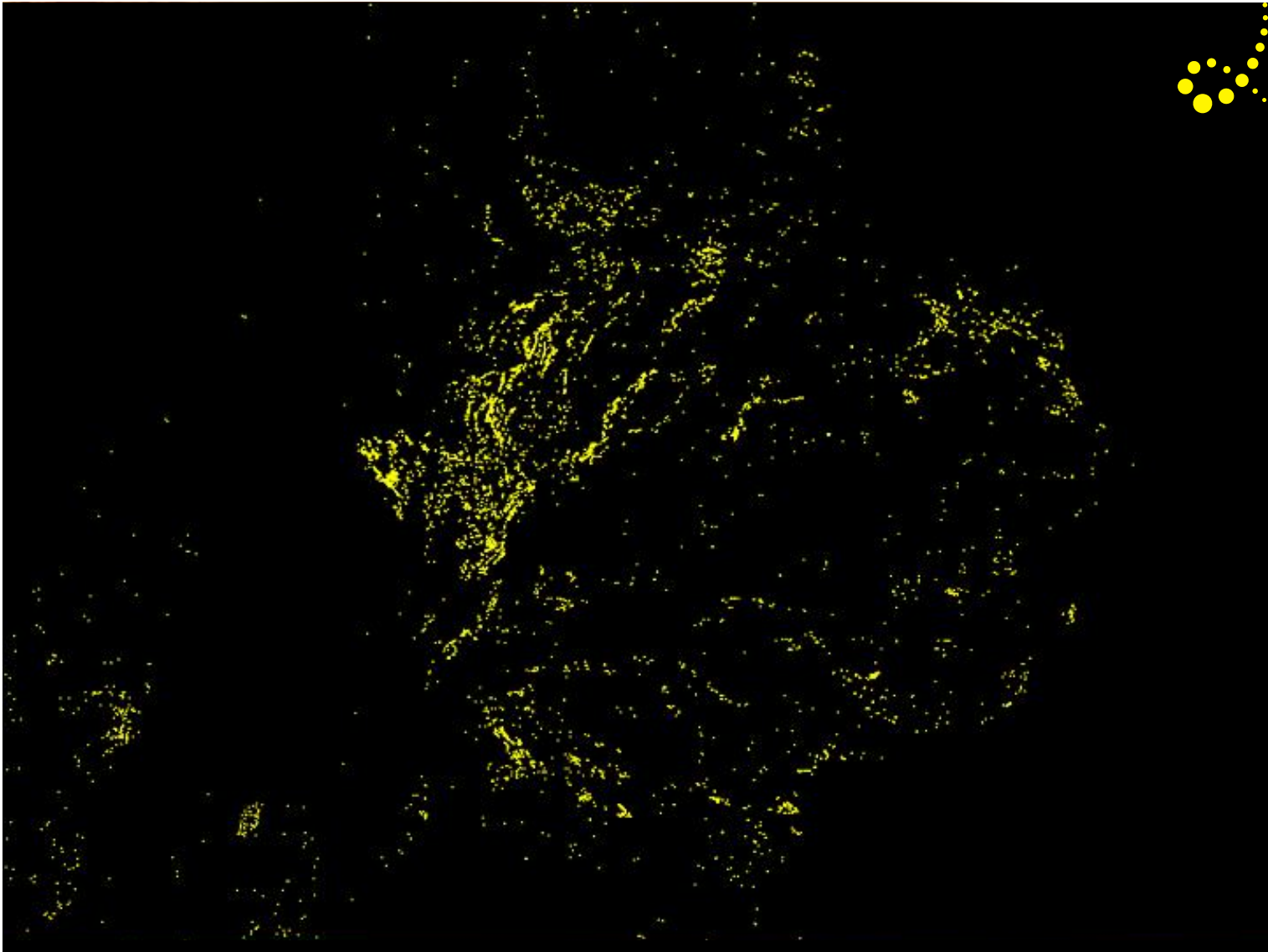
Sweden

Serious about mining investment for the future



- Ranked in top five countries for low mining investment risk
- Prepared to move towns to extend mine life – Kiruna iron deposit



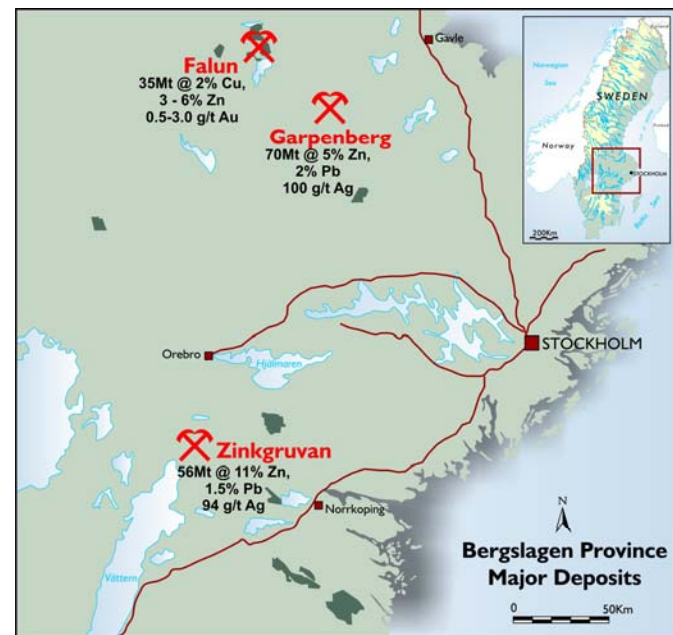


Bergslagen

Genuine world class mineral belt



- Zinkgruvan Zn-Pb-Ag
 - Original pre-erosion size probably at least 100Mt a “Century-sized” system
- Garpenberg Zn-Cu-Pb-Ag
 - 4 deposits over 3km strike length totaling 70Mt
- Falun Cu-Au-Zn
 - 35 Mt massive sulphide body – one of the largest in the world
 - Probably much larger originally



But very under-explored despite this potential



- Pre-1992 foreign companies could not own properties in their own right
- Several Drake properties have not been explored in the past 50 years, if at all
 - Most have never seen detailed mapping, structural geology, rock geochemistry and electromagnetics
- No digital database for the Falun mine

Major recent brownfields discoveries



- Garpenberg
 - New orebodies discovered between known existing orebodies
 - More than doubled resources in past decade
- Zinkgruvan
 - Zinkgruvan: discovery has kept pace with 0.85 Mtpa production for more than 25 years
 - New discovery northwest of mine



And greenfields discoveries in the past year



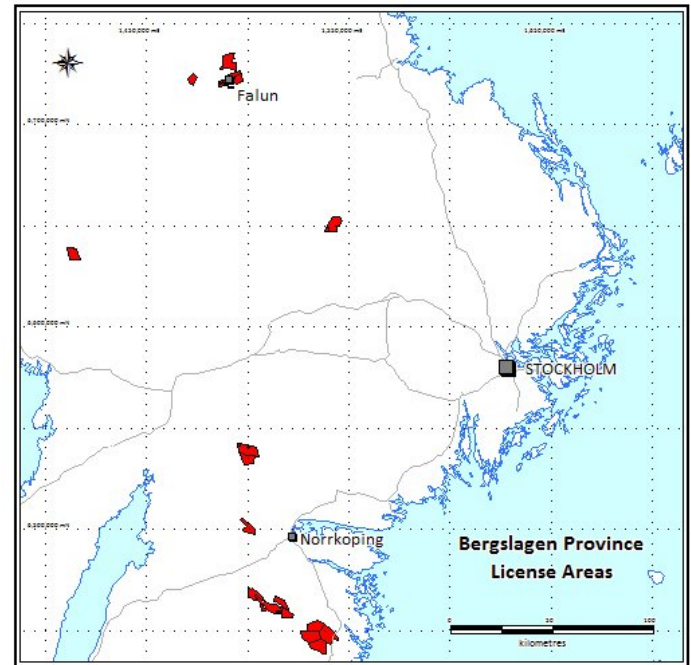
- Lundin Mining has announced 2 discoveries on separate licenses near the town of Ludvika in western Bergslagen
- Tumi Resources has announced a major new silver-zinc discovery near the historic mining town of Sala



The Drake portfolio in Sweden



- 24 licenses
- Drake 100% interest in all properties
- Includes 2 largest historic copper producers in Bergslagen
- Includes sulphide deposits never been drilled at depth
- High ranking geochemical and VTEM targets



Falun copper-zinc-gold deposit

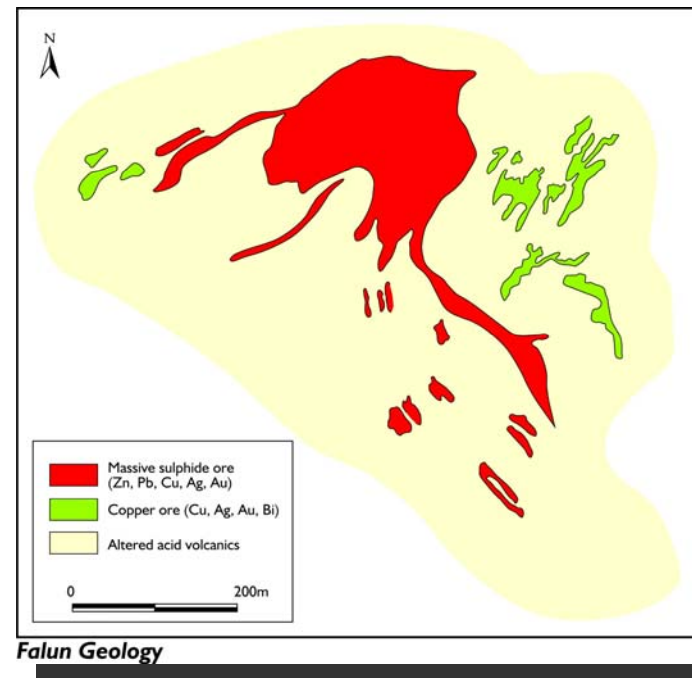


- Mined for 1300 years
- Supported the Swedish economy for centuries
- Closed in 1992
- Exceptional data record remains
- Centre of a richly mineralised district



Falun ore types

- Mining concentrated on the massive, pyritic sulphide deposit
 - Typical grades 1-4% Cu, 2-8% Zn, 100 g/t Ag, 1 g/t Au
- Siliceous copper gold ores
 - 1-5% Cu, 1-30 g/t Au
 - Local bonanza gold grades



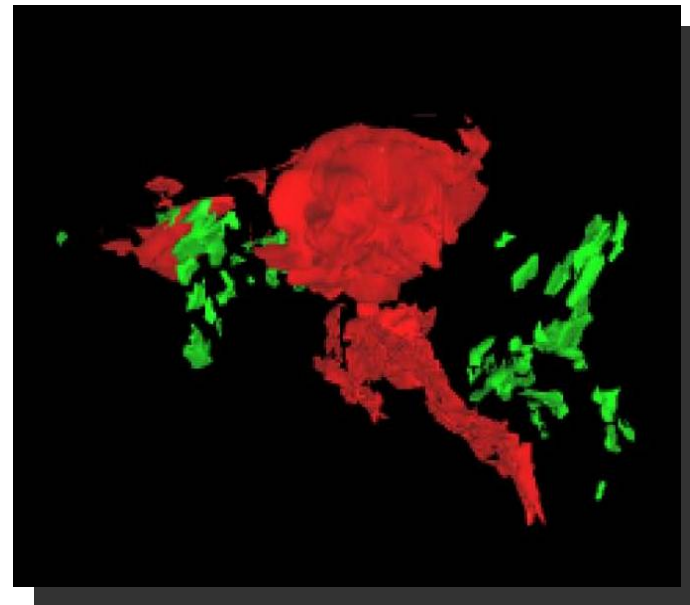
Massive sulphide ores

- Funnel-shaped body of ore focus of previous mining
 - Mining to 450 metres depth
- Intersections of massive sulphides down to 850 metres
- Margins of orebody fault controlled

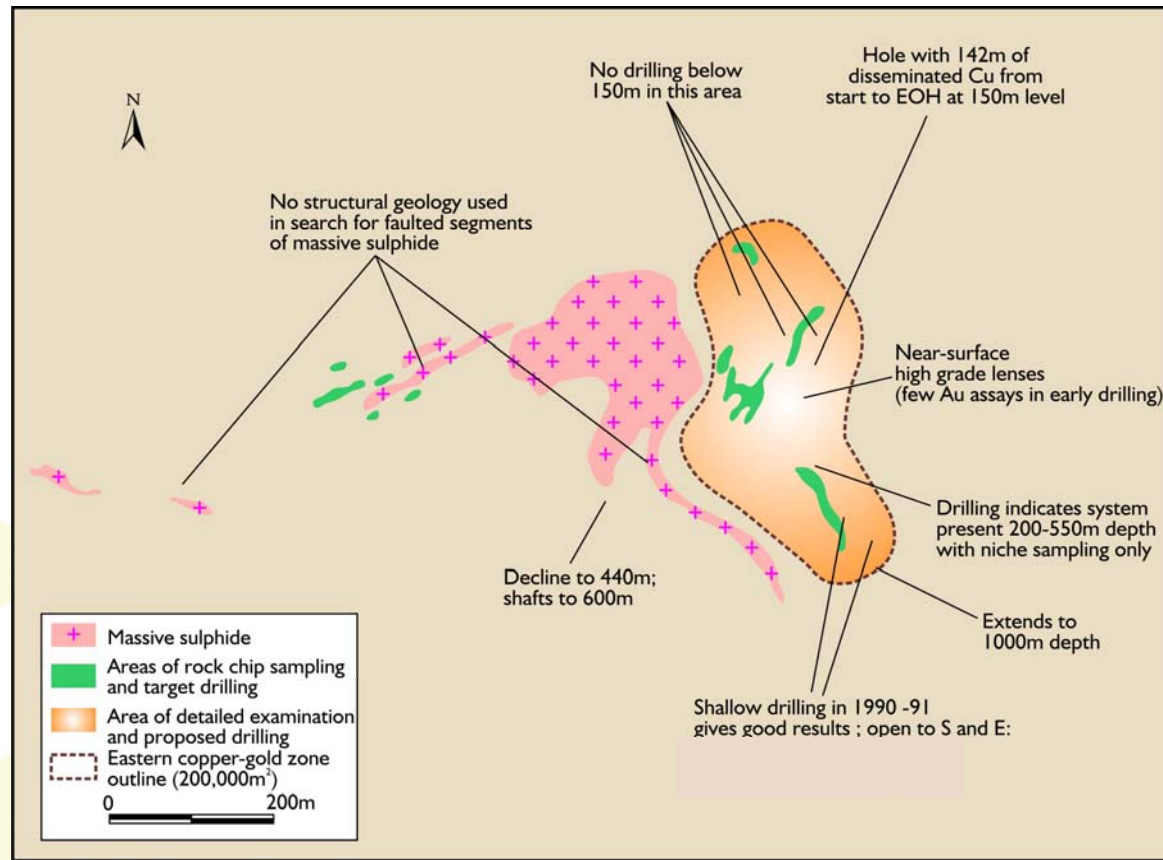


Copper-gold ores

- Copper-gold system not considered by past miners
- Only high grade copper shoots mined 100-200 years ago
- Sub-vertical continuous zones of massive to disseminated mineralisation
- Traced to 1000 metres depth
- Few gold assays even though intersections of 500-800 g/t over short intervals



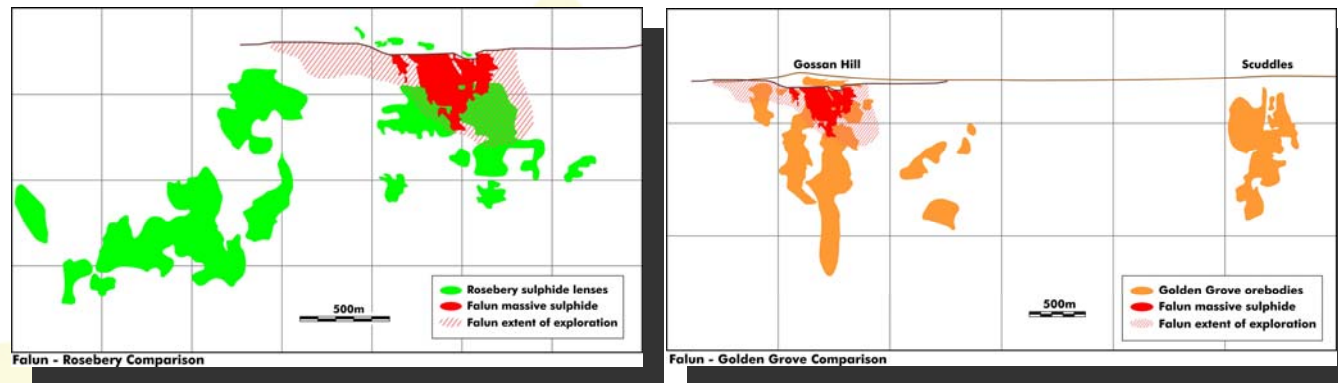
High potential around an exceptional orebody



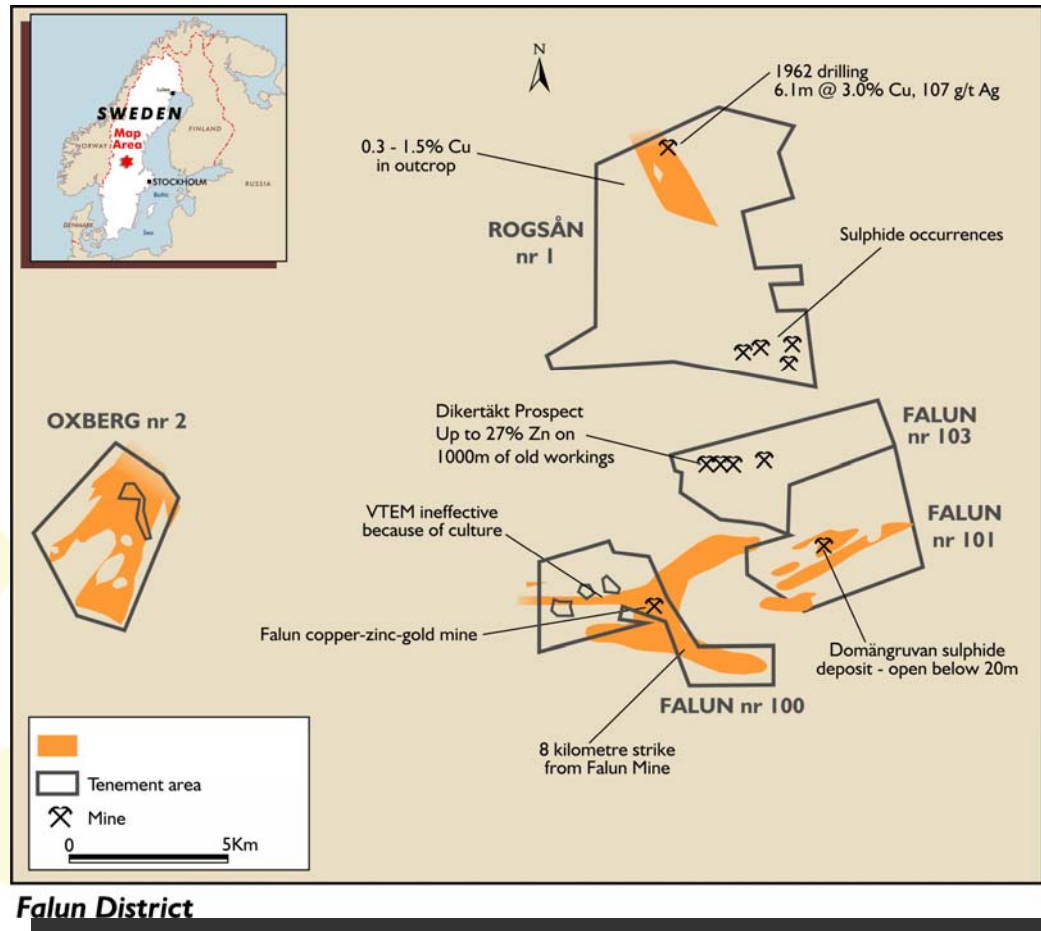
Falun Copper-Zinc Mine - orebody projected to surface



Comparisons with other massive sulphide systems suggest that only some 10% of the Falun system tested

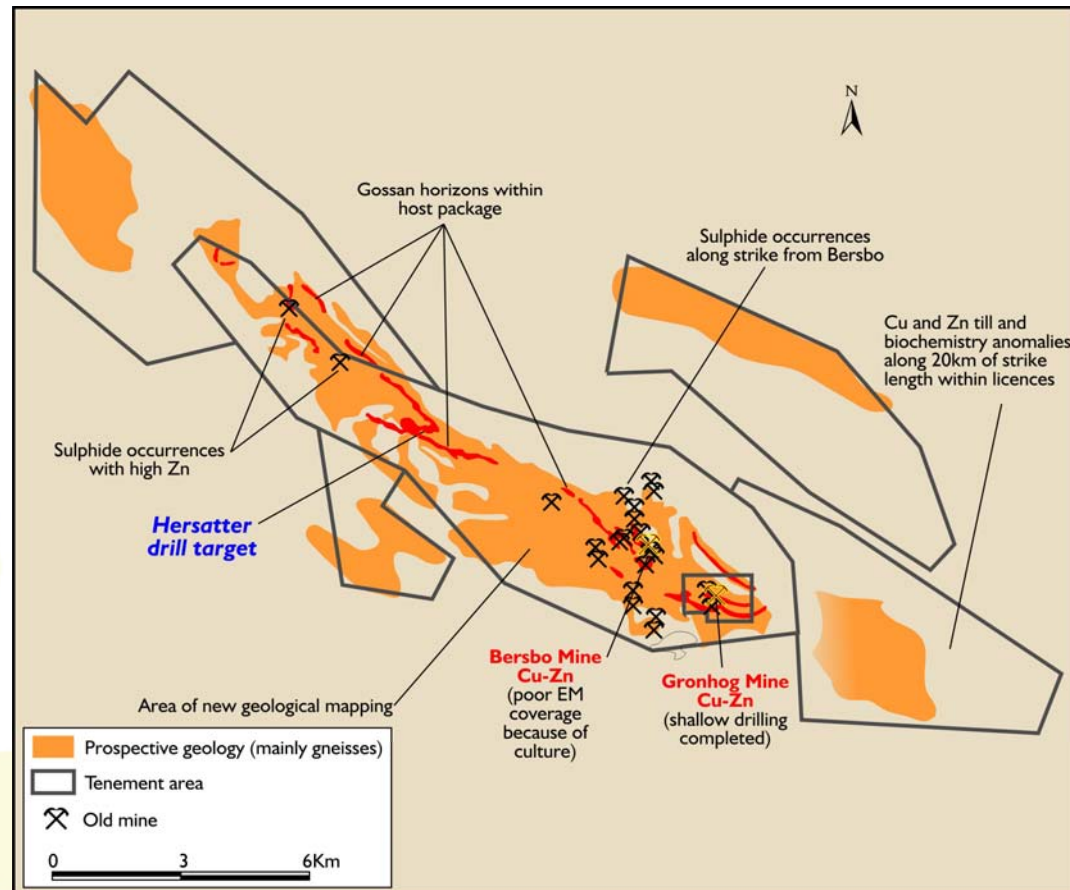


Potential of the Falun district



Bersbo

Second largest historic copper mine in district



Bersbo Location

Exploration completed



- VTEM electromagnetics survey
- Ultra-detailed magnetics
- Structural mapping
- Acquisition of past mining and exploration records
- 3D model for Falun



Conclusions and summary



- Quality portfolio in an under-explored, world class mineral belt
- Copper-gold deposit to be defined at Falun
- High ranking VTEM conductors to be followed up
- Un-tested sulphide bodies waiting to be drilled
 - Up to 27% Zn in samples
- Very experienced project generation team continuing to identify further projects

